



Meet the
Sage

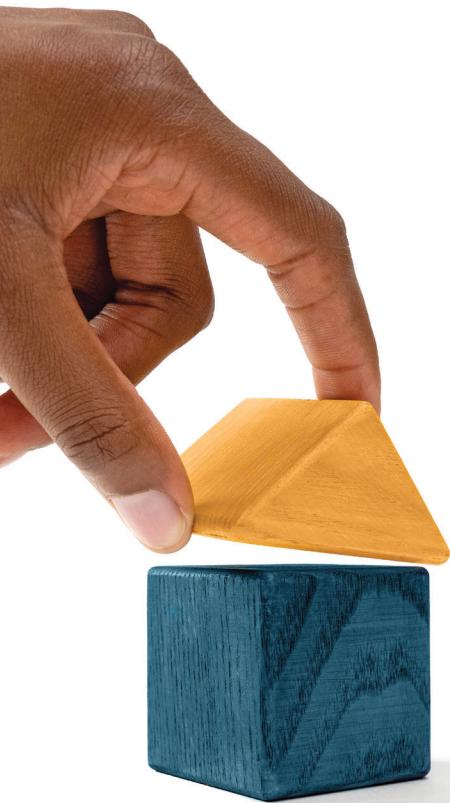

 LANED COLLECTION **1226** SQ. FT. **3**  **2.5** 



Striving to make buying a home simple, easier and **more enjoyable.**

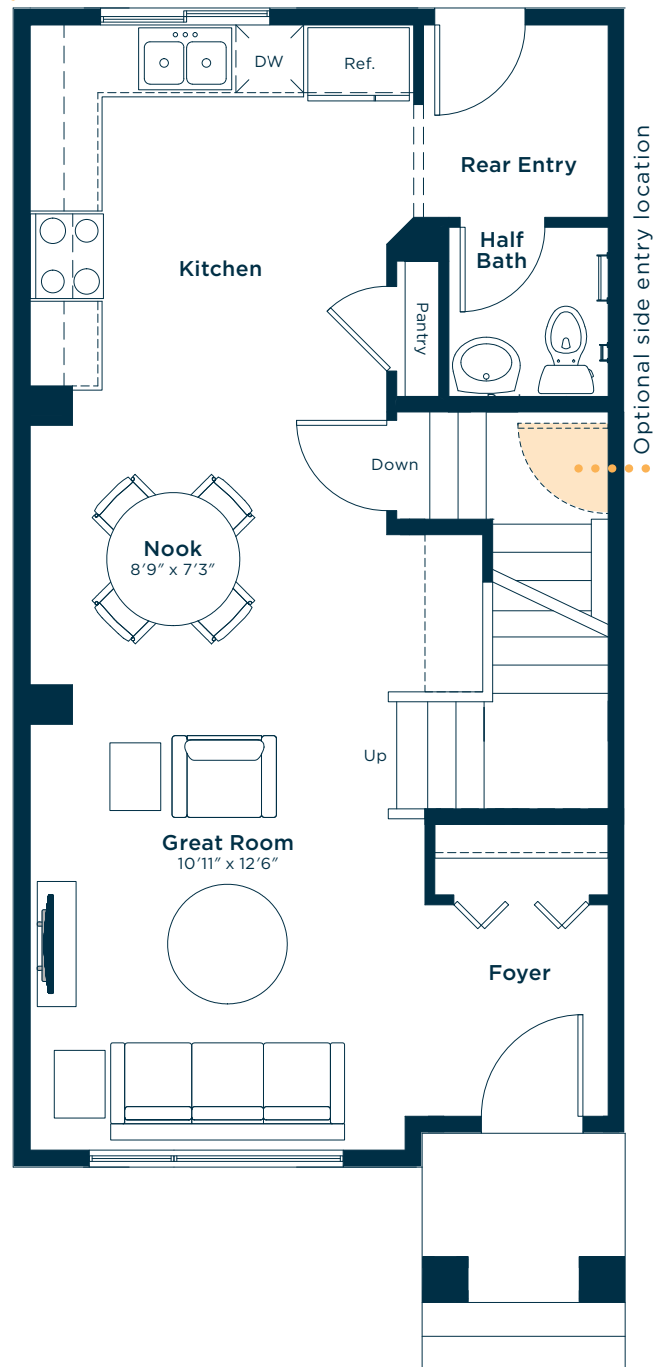
At Excel Homes, our mission is simple: to create a home-buying experience that delivers the most joy and value to our homeowners. For over 35 years, we've built over 14,000 homes in over 80+ communities and received over 75 awards for design and industry excellence. That experience has helped develop a refined homebuying experience that values your time, simplifies the big decisions, and minimizes any stress that can come with building a new home.

At Excel, the experience of building your home will be exciting, easy and memorable throughout the entire process.

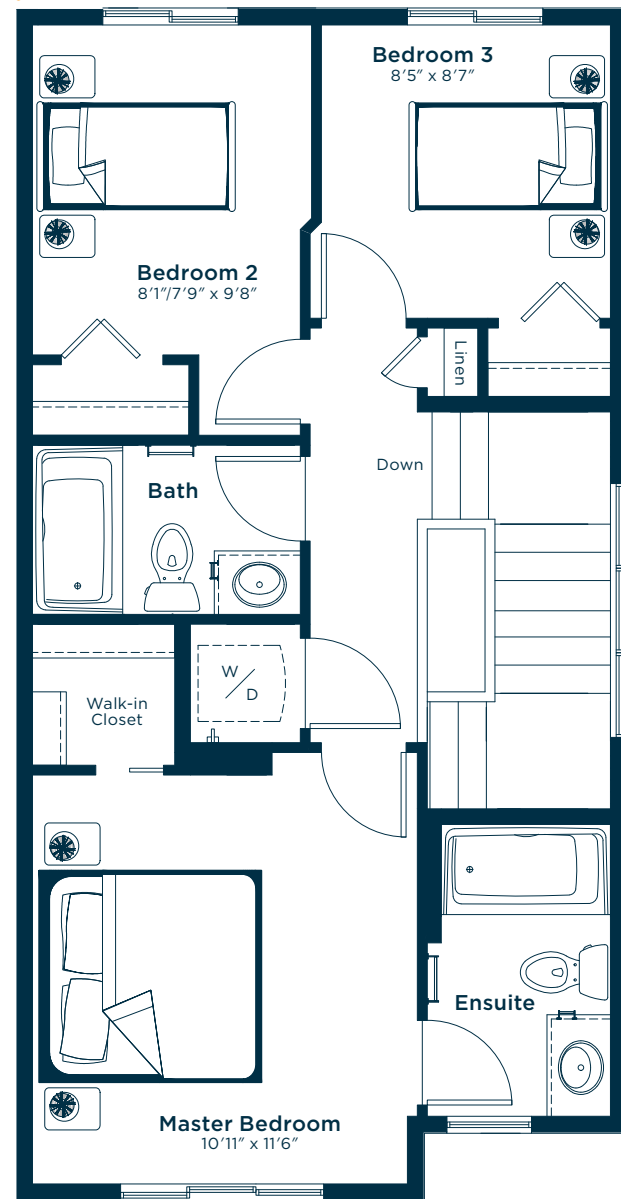


Meet the Sage

MAIN FLOOR
611 SQ.FT.

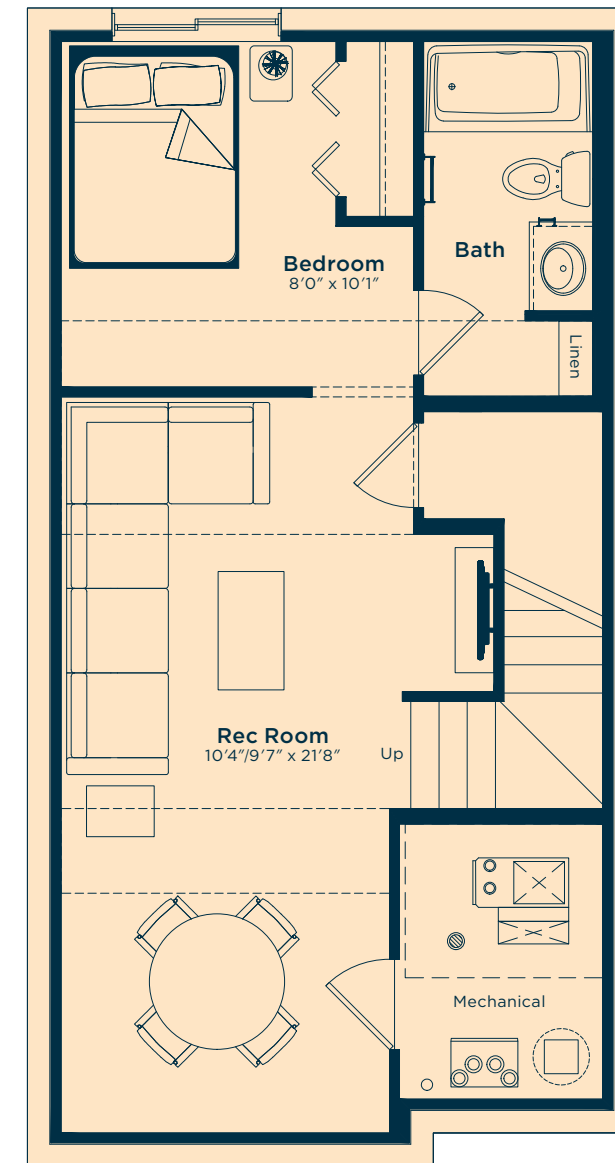


SECOND FLOOR
615 SQ.FT.

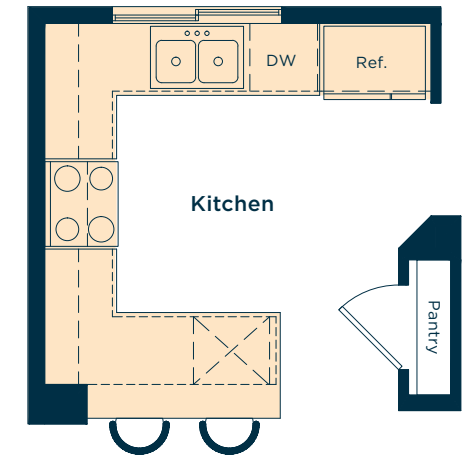


Ask us about these and many more Sage floor plan options.

Develop the basement below with an extra bedroom, rec room and bath
435 SQ.FT.



Upgrade the kitchen to Level 1 for a peninsula extension, 42" upper cabinets, hoodfan, pot & pans drawer and more



Add a rear deck and patio with stairs



Wait... there's more!

- We also have options for pot light arrangements, rear entry, railing and much more!
- Ask your Area Manager to find out more today.