

#590157050

Meet the Collingwood

QUICK POSSESSION HOME IN SILVER SPRUCE
243 SILVER SPRUCE GROVE SW CALGARY, ALBERTA



FRONT GARAGE
COLLECTION

2227 SQ.
FT.

3

2.5



This home's interior palette is the following:



LVP:
Endless Summer



Cabinets:
First Class



Backsplash:
Glossy Mist



Bathroom Quartz
Countertops:
Bright White



Kitchen Quartz
Countertops:
Elegant White



Carpet:
Calipso



Paint:
Designer Grey

This home features the following:

- Level 1 kitchen
- Exterior side entry to basement
- Gasline to BBQ
- Developed basement suite (two bedroom)

Standard features:

- BUILT GREEN® certified home
- Stainless steel appliances
- Thermally fused laminate cabinets
- Luxury vinyl plank throughout entire main floor and second floor wet areas
- Please see your Area Manager for the complete list of standard features

You can purchase this home for:

\$

including home, lot and GST

Home availability:



For more information:



Tarek Safadi
Livin AREA MANAGER

T: 403-850-2920
E: silverspruce@excelhomes.ca

**EXCEL
HOMES**

Simplifying your journey home.

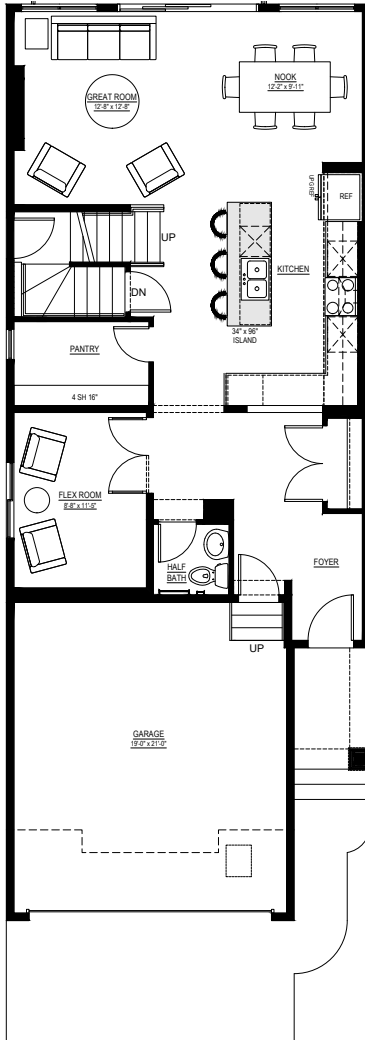
This floorplan represents one version of this home and measurements are approximate. The square footage, measurements and layout may vary based on the elevation and/or lot. All elevations shown are artist's concept only and will vary by community. The builder reserves the right to make modifications or substitutions should they be necessary. All plans, options, dimensions, specifications, materials and drawings are subject to change without notice. E.&O.E

Meet the Collingwood

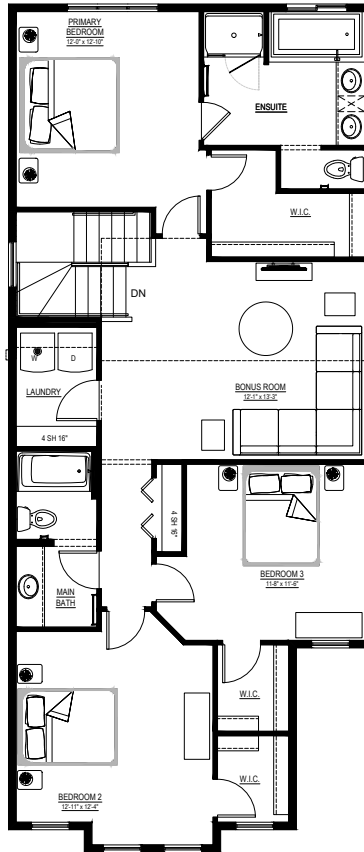
QUICK POSSESSION HOME IN SILVER SPRUCE 243 SILVER SPRUCE GROVE SW

Floor plans

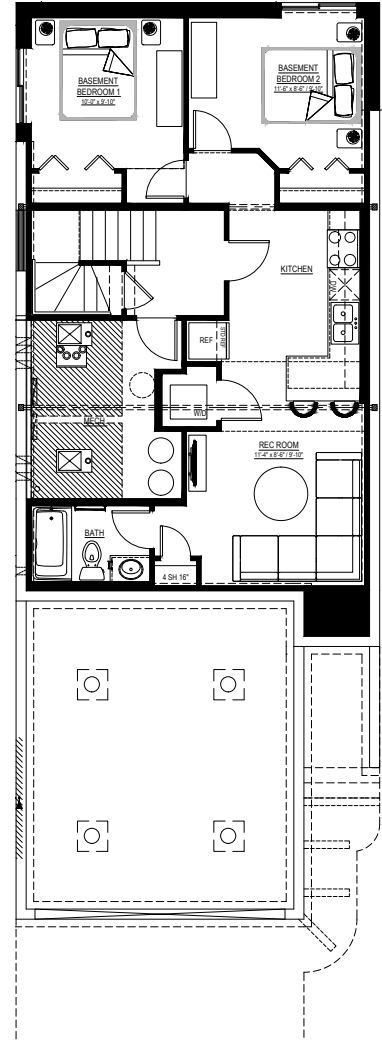
MAIN FLOOR
965 SQ.FT.



SECOND FLOOR
1262 SQ.FT.



BASEMENT SUITE
695 SQ.FT.



For more information.

Kent Shupe
SILVER SPRUCE AREA MANAGER

403-850-2920
SILVERSPRUCE@EXCELHOMES.CA

EXCELHOMES.CA