

Meet the Rosewood

QUICK POSSESSION HOME IN EDMONTON
3508 ERLANGER LINK NW EDMONTON, ALBERTA



FRONT GARAGE
COLLECTION

2238 SQ.
FT.

5

3



This home's interior palette is the following:



LVP:
Gabon



Cabinets:
Chameleon



Backsplash:
Light Grey Glossy



Quartz Countertops:
White Rock



Carpet:
Weather



Paint:
Summit

This home features the following:

- Level 2 kitchen
- Pantry with coffee station
- Soaker tub in ensuite
- Full bed & bath on main floor
- Exterior side entry to basement
- Standard height electric fireplace

Standard features:

- BUILT GREEN® certified home
- Stainless steel appliances
- Thermally fused laminate cabinets
- Luxury vinyl plank throughout entire main floor and second floor wet areas
- Please see your Area Manager for the complete list of standard features

You can purchase this home for:

\$

including home, lot and GST

Home availability:



For more information:



Anabela daPonte Cordelro
EDGEMONT AREA MANAGER

T: 780-756-8515

E: edgemont@excelhomes.ca



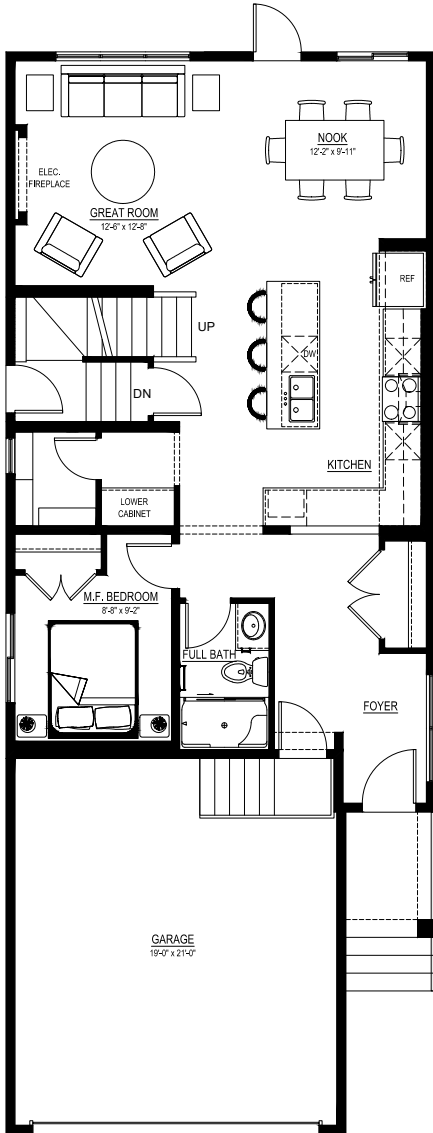
Simplifying your journey home.

Meet the Rosewood

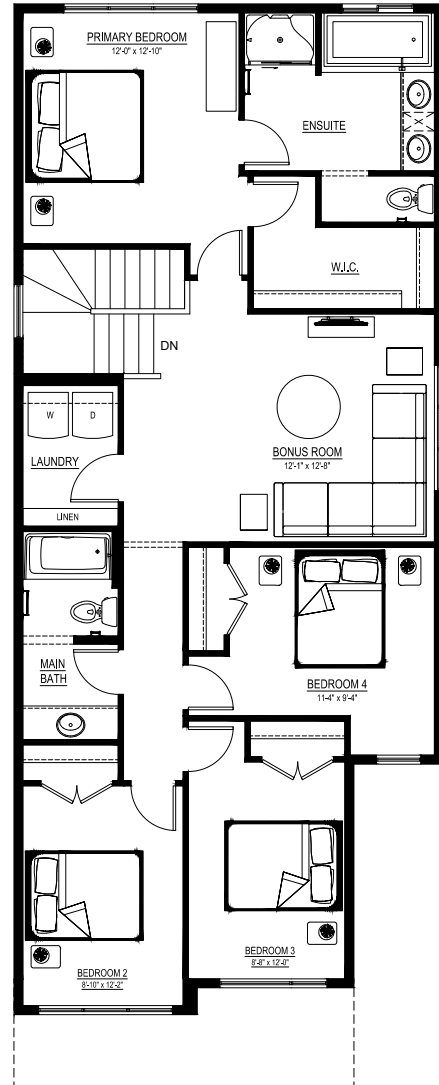
QUICK POSSESSION HOME IN EDMONTON 3508 ERLANGER LINK NW

Floor plans

MAIN FLOOR
965 SQ.FT.



SECOND FLOOR
1273 SQ.FT.



For more
information.

Anabela daPonte Cordelro
EDMONTON AREA MANAGER

780-756-8515
EDMONTON@EXCELHOMES.CA

EXCELHOMES.CA