

# Meet the Collingwood

SHOW HOME IN HOMESTEAD  
19 HOMESTEAD CLOSE NE CALGARY, ALBERTA



FRONT GARAGE  
COLLECTION

2739 SQ. FT.

5

3.5

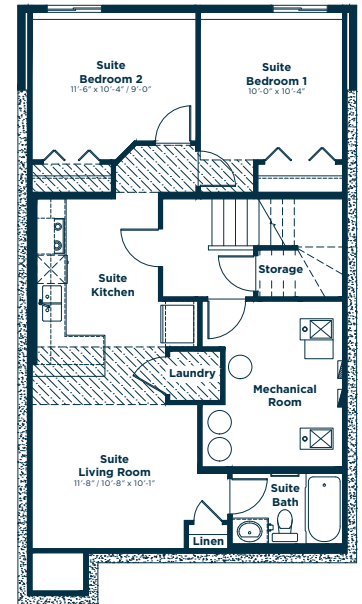
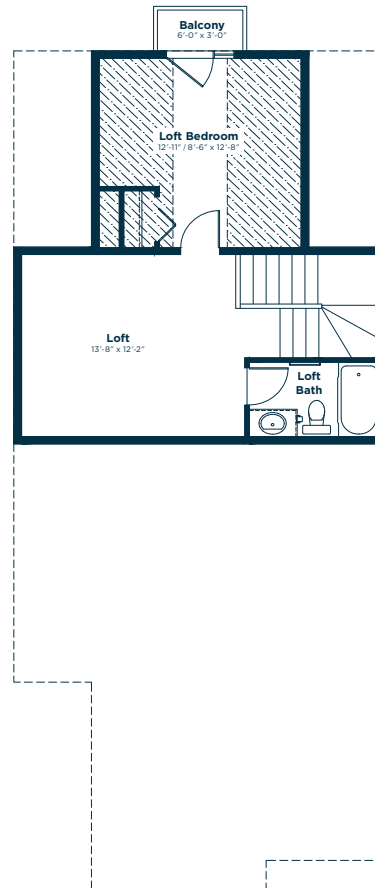
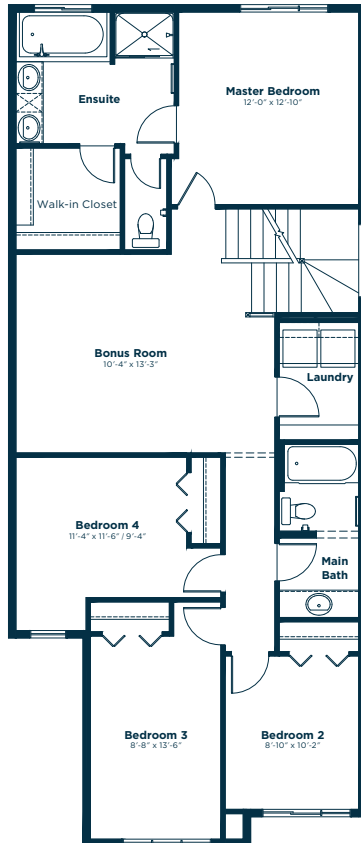
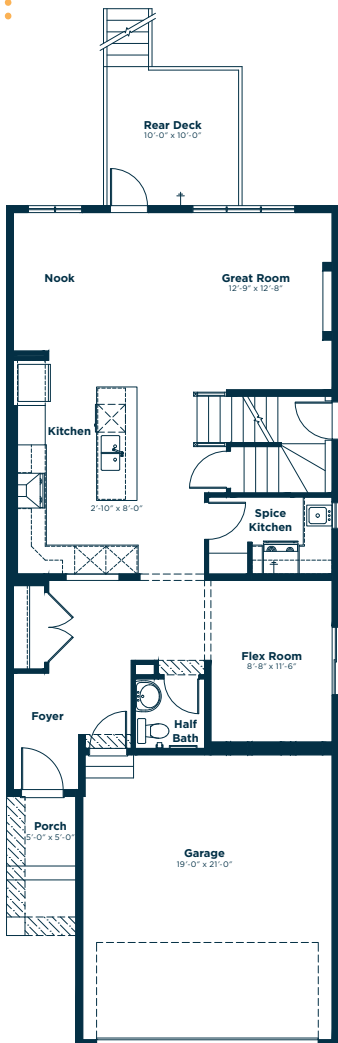


MAIN FLOOR  
965 SQ. FT.

SECOND FLOOR  
1271 SQ. FT.

LOFT LEVEL  
503 SQ. FT.

DEVELOPED BASEMENT  
695 SQ. FT.



**EXCEL  
HOMES**

Simplifying your journey home.

# Meet the Collingwood

SHOW HOME IN HOMESTEAD

## Options and upgrades.

### MAIN FLOOR

- 9' Main Floor Ceiling
- Increased Window Height
- Upgraded Interior Doors
- Paint: Designer Grey
- LVP: One Eyed Jacks
- Carpet: Garden Terrace - Mystic Highlands
- Exterior Entry to Basement

### KITCHEN

- Upgraded Kitchen
- Addition of a Spice Kitchen
- Additional Pot Lights
- Upgraded Fridge, Wall Oven, Microwave, Hoodfan
- Engineered Stone Countertops - Oyster Shell
- Additional Pot Lights
- Waterline to Fridge
- Cabinet: Glacier White & Dove Grey
- Backsplash: Bright White

### GREAT ROOM

- Additional Pot Lights
- Electric Fireplace
- Fireplace Tile: Volkas Grigio - Polished

### SECOND FLOOR:

- Vaulted Bonus Room
- Additional Pot Lights to Bonus Room
- Paint: Designer Grey
- LVP: Invisible Stripes
- Carpet: Garden Terrace - Mystic Highlands
- Upgraded Laundry Room
- Level 2 Washer & Dryer

### ENSUITE

- Upgraded Ensuite
- Engineered Stone Countertop: Oyster Shell
- Tile: Volkas Grigio - Polished
- Backsplash: Volkas Grigio - Polished

### MAIN BATH

- Dual Sinks
- Tile Flooring: Volkas Grigio - Polished
- Tile Backsplash: Volkas Grigio - Polished

### LOFT

- Carpet: Garden Terrace - Mystic Highlands
- Bathroom Tile: Volkas Grigio - Polished
- Laminate Countertops: Chambrey Gris

### BASEMENT

- Developed 2 Bedroom Basement Suite
- Additional Pot Lights
- Carpet: Potters Clay
- LVP: Endless Summer
- Bathroom Tile: Volkas Grigio - Polished
- Level 2 Washer & Dryer

### EXTERIOR

- Pressure Treated Rear Deck
- Gasline to BBQ

### OTHER

- Audio Zone System
- Security Prewiring
- Air Conditioning
- Knockdown Ceiling Finish
- Upgraded Plumbing Package
- Please see your Area Manager for the additional upgrades included in your home

For more information.

**Katie Schock**  
HOMESTEAD AREA MANAGER

**403-475-5817**  
HOMESTEAD@EXCELHOMES.CA

**EXCELHOMES.CA**