

# Meet the Hartwell

SHOW HOME IN VITA CRYSTALLINA  
18012 70 STREET NW EDMONTON, ALBERTA

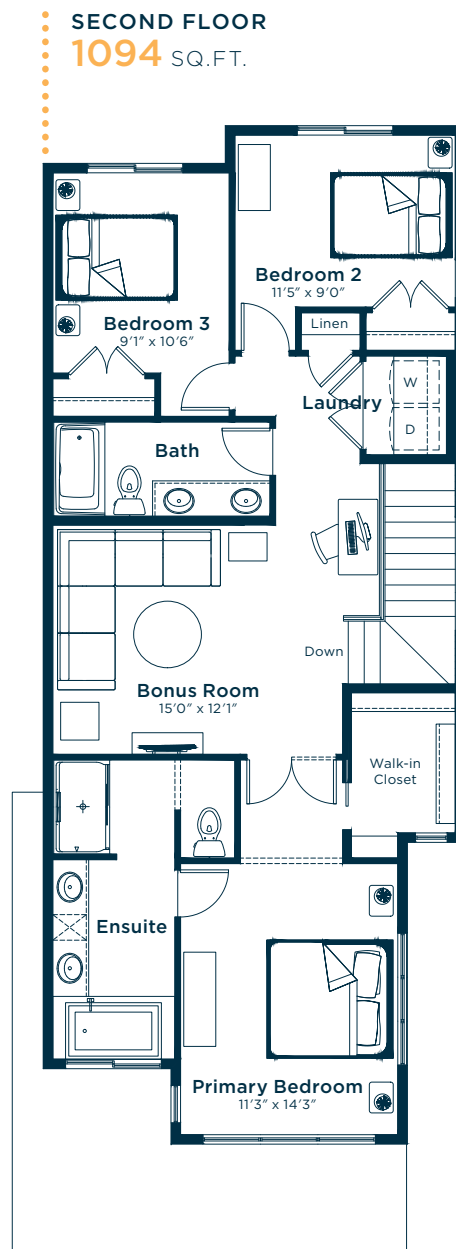
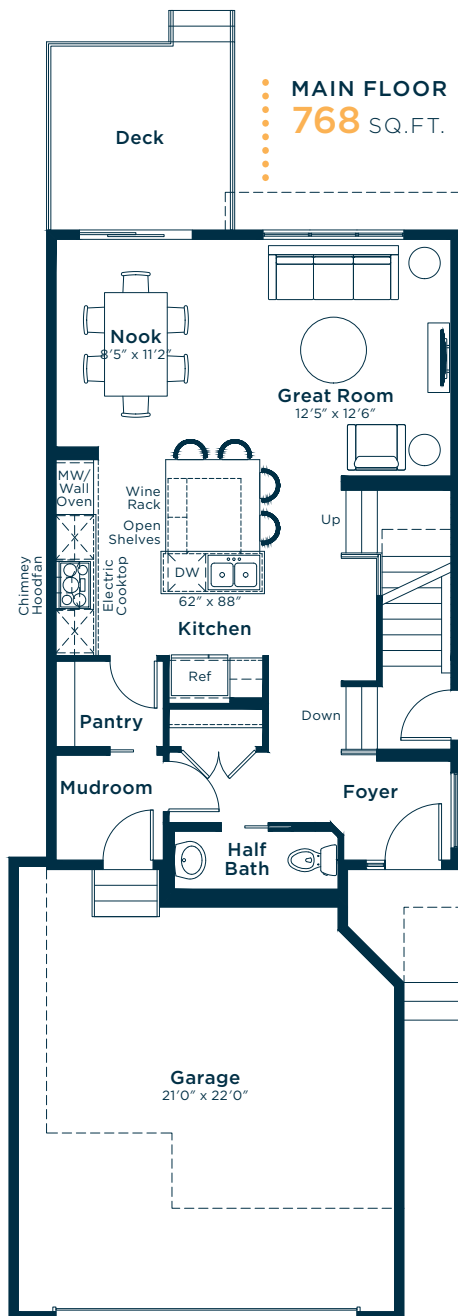


FRONT GARAGE  
COLLECTION

1862 SQ.  
FT.

3

2.5



**EXCEL  
HOMES**

Simplifying your journey home.

# Meet the Hartwell

SHOW HOME IN VITA CRYSTALLINA

## Options and upgrades.

### MAIN FLOOR

- 9' Main Floor Ceiling
- Additional Pot Lights in Kitchen and Great Room
- LVP Flooring: Beach Oak

### KITCHEN

- Level 3 Kitchen Upgrade
- Level 2 Undermount Sink
- Black Stainless Steel Appliance Package
- Cabinets: Glacier White
- Island Lower Cabinets: Wrought Iron
- Quartz Countertops: Helix
- Backsplash: Storm Grey Honeycomb

### SECOND FLOOR

- Cabinets: Glacier White
- Quartz Countertops: Helix
- Wall/Floor Tile: Porcelain Black Matte
- Carpet: City Loft

### ENSUITE

- Four-Piece Ensuite Upgrade (Level 0)
- Upgraded Soaker Tub
- Dual Sinks

### MAIN BATH

- Dual Sinks

### LAUNDRY

- Level 1 Laundry Room Upgrade
- Black Stainless Steel Washer and Dryer Package
- Laminate Countertops: Moonlighting Paper

### EXTERIOR

- Exterior Side Entry to Basement
- Increased Garage Width
- Rear Pressure Treated Deck

### OTHER

- Hartwell Elevation F
- Knockdown Ceiling Finish
- Paint: Designer Grey
- Level 3 Lighting Package
- Level 1 Plumbing Package
- Level 4 Smart Home Automation Package
- Paint Grade Railing and Spindles
- Audio Zone Systems
- Air Conditioning Included
- Show Home Landscaping
- Security Pre-wiring
- Please see your Area Manager for the additional upgrades included in your home

For more information.

**André Léauté**  
VITA CRYSTALLINA AREA MANAGER

**780-718-4869**  
VITACRYSTALLINA@EXCELHOMES.CA

**EXCELHOMES.CA**